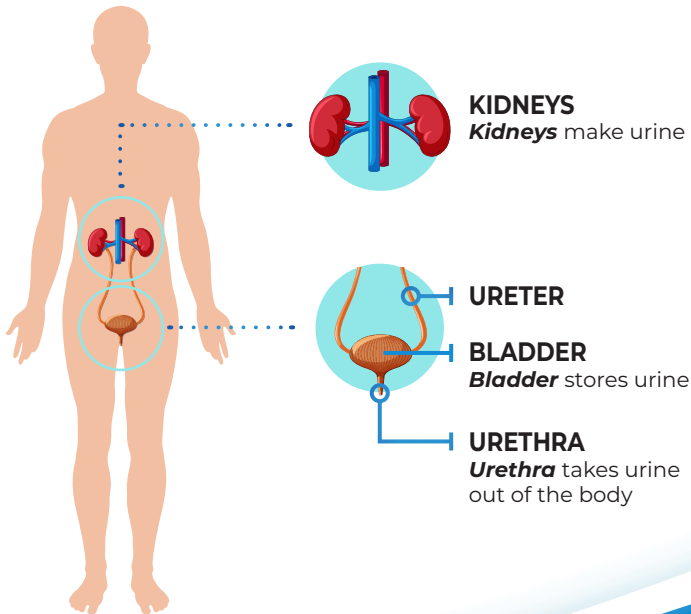


URINARY TRACT INFECTIONS

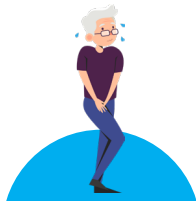
A leaflet for older adults and their families

WHAT IS A URINARY TRACT INFECTION?

A urinary tract infection occurs when bacteria enter the urinary tract and cause symptoms. The bacteria involved in a urinary tract infection come from your own gastrointestinal tract, where they normally exist.



WHAT ARE THE TYPICAL SYMPTOMS OF A URINARY TRACT INFECTION?



Frequent urination
or urge



Burning sensation or
pain when urinating

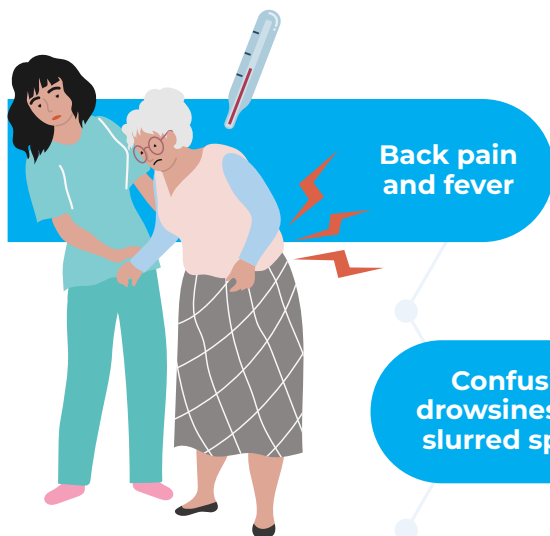


Blood in urine

- If you have some of these symptoms, you may have a urinary tract infection and you should contact a nurse or a medical doctor.
- If your symptoms do not improve within a couple of days after starting antibiotics, contact your doctor/nurse.

WHAT ARE THE SYMPTOMS OF A SERIOUS INFECTION?

If the symptoms above are followed by symptoms below, it may be due to a possibly serious infection or complication and you should contact a healthcare professional urgently:



Back pain
and fever



Confusion,
drowsiness and
slurred speech

